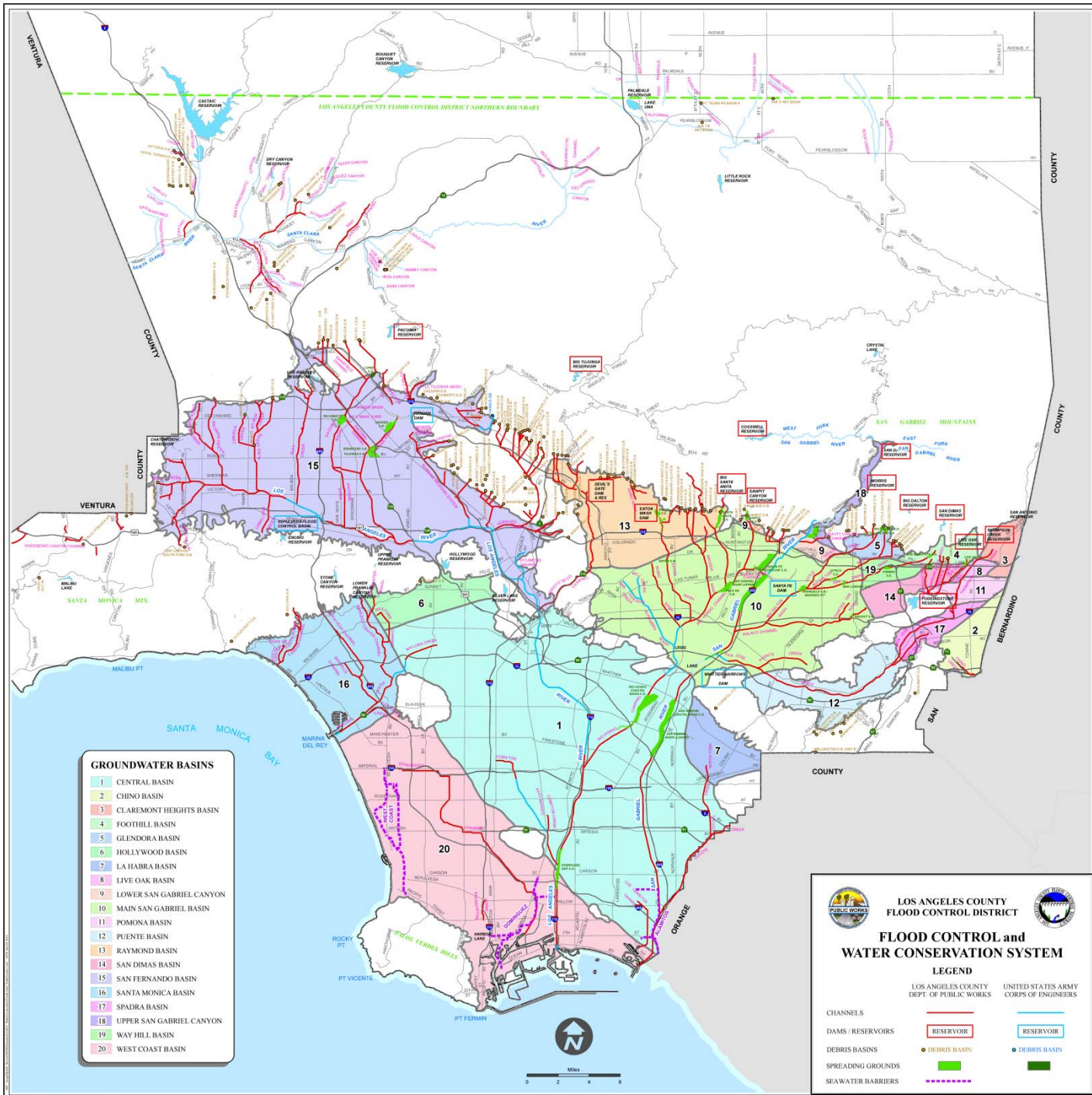


County of Los Angeles Department  
Of Public Works

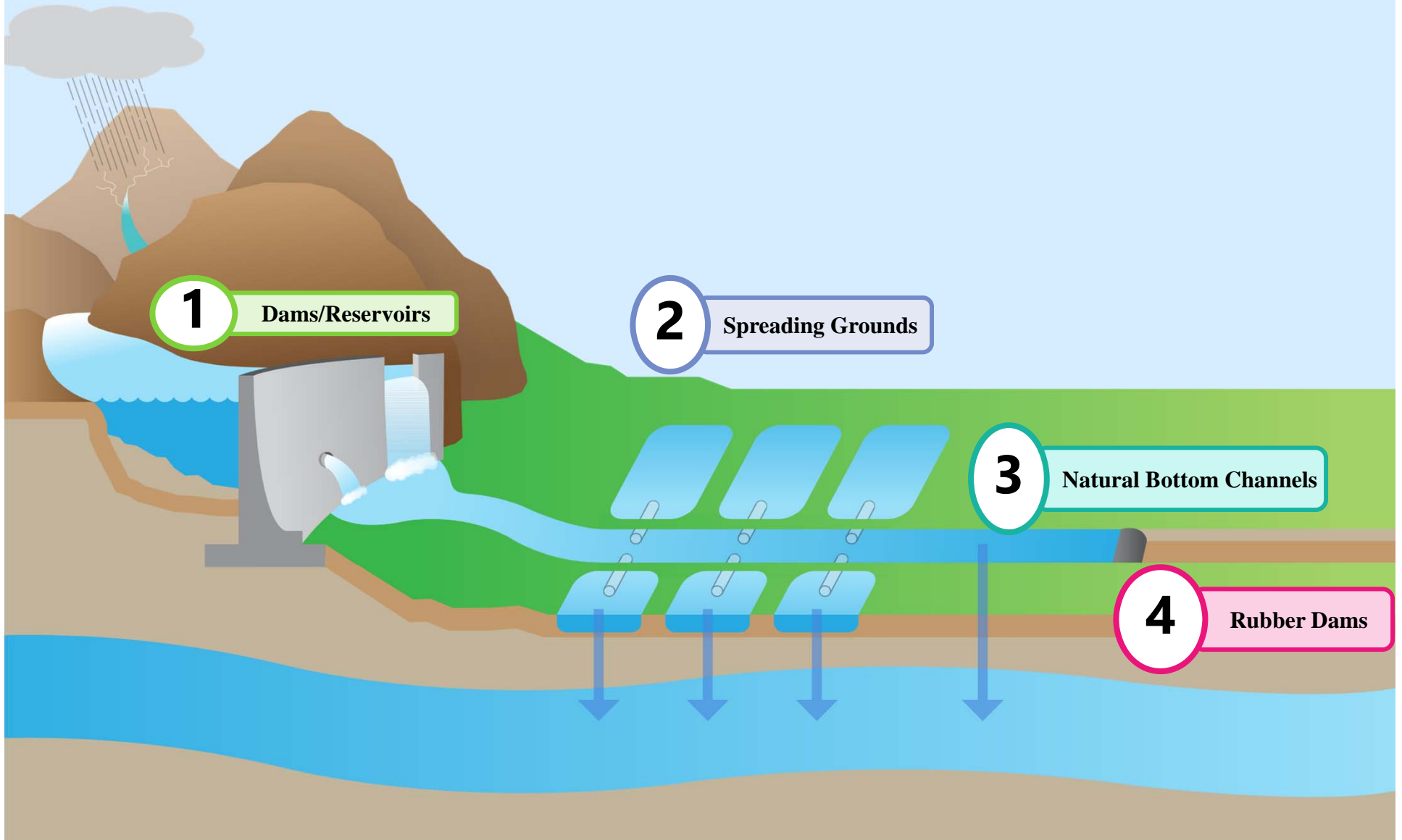
**OPERATIONAL READINESS FOR  
STORMWATER CAPTURE**



Eric Batman P.E.

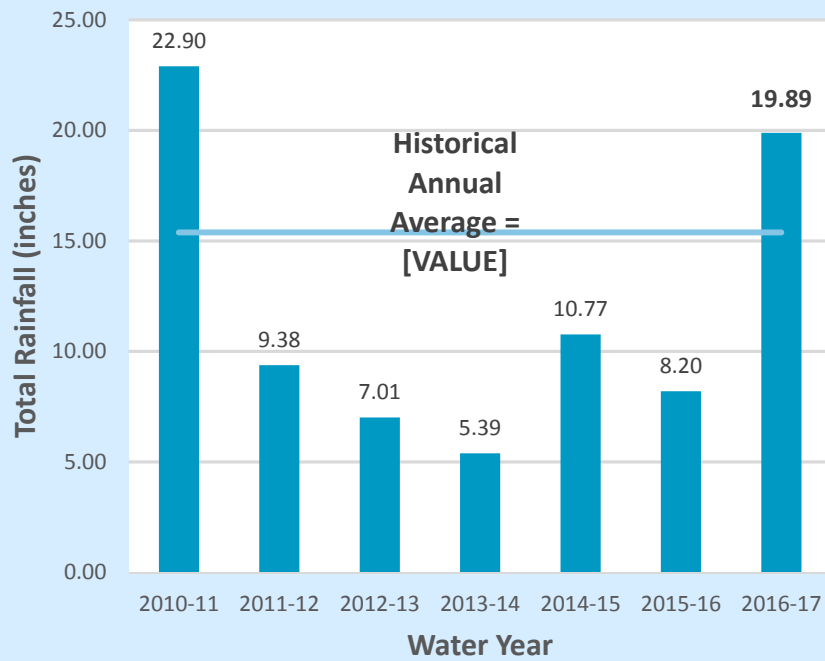


# Stormwater Capture

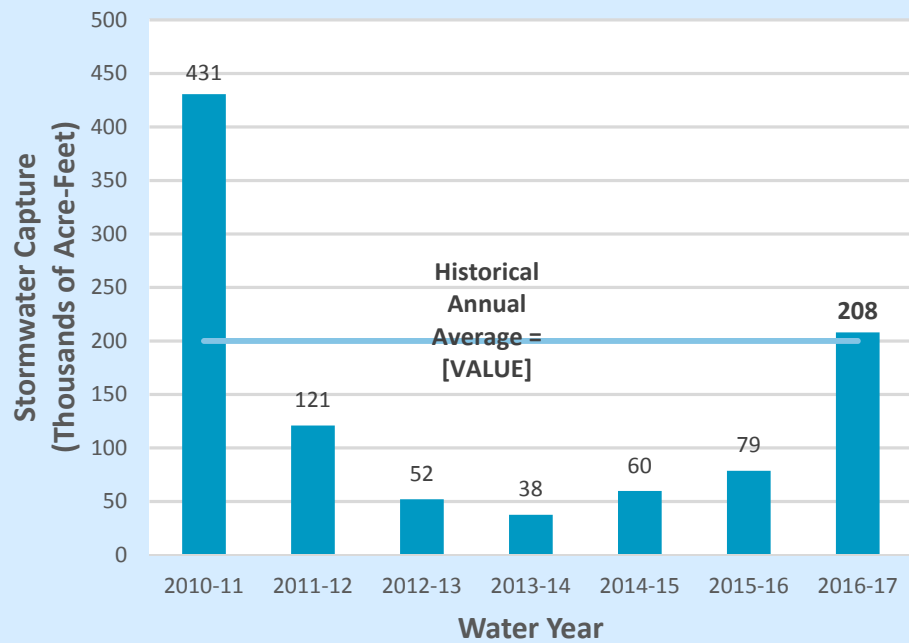


# Summary of 2016-17 Water Year Rainfall and Stormwater Capture

### Total Rainfall @ LA Ducommun St.

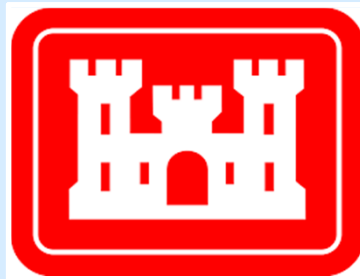


### Total Stormwater Captured

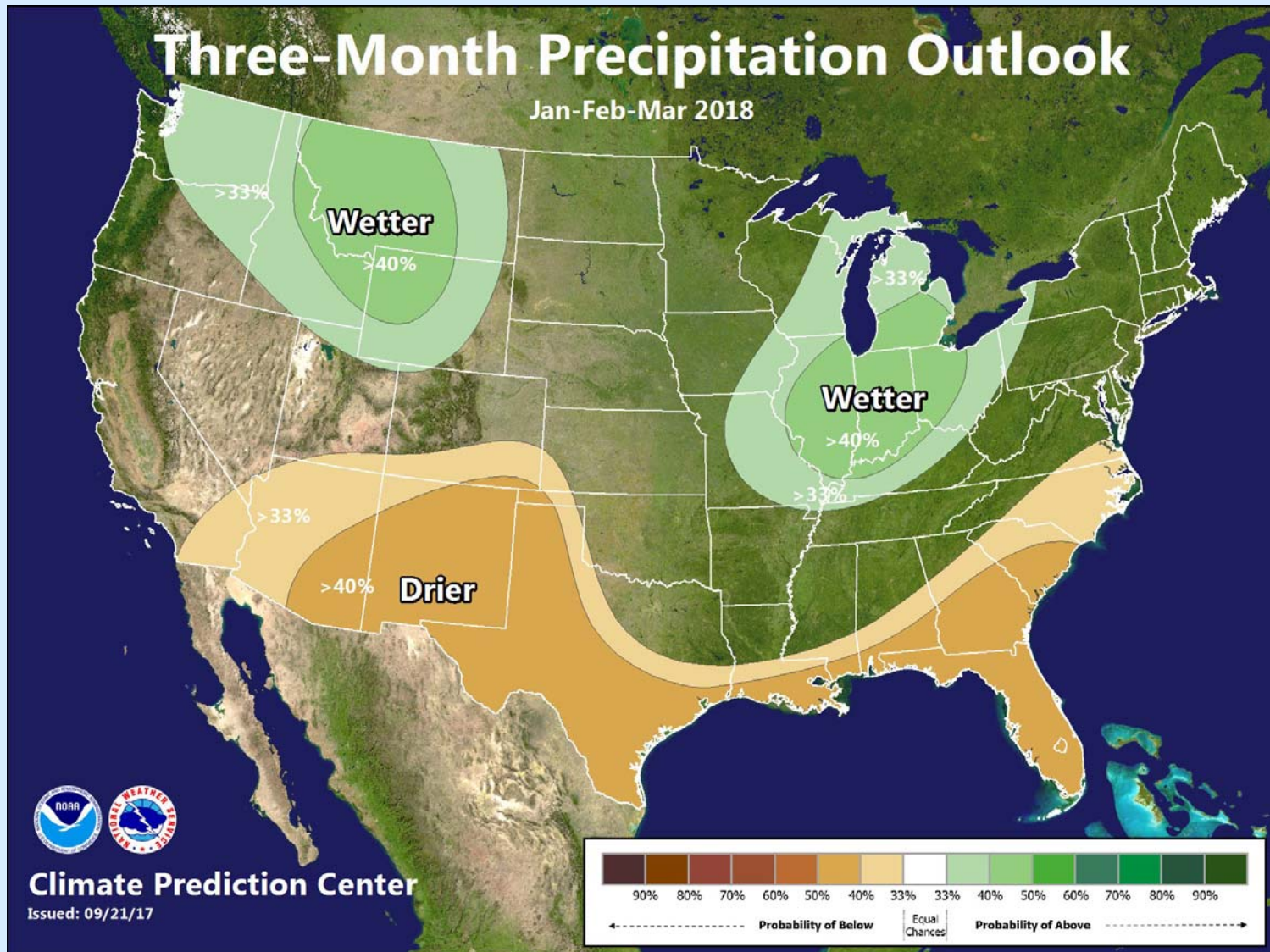


# Pre-Storm Coordination Activities

- National Weather Service: winter hydrology coordination meeting
- United States Army Corps of Engineers: storm coordination meeting
- California Department of Water Resources: flood coordination meeting



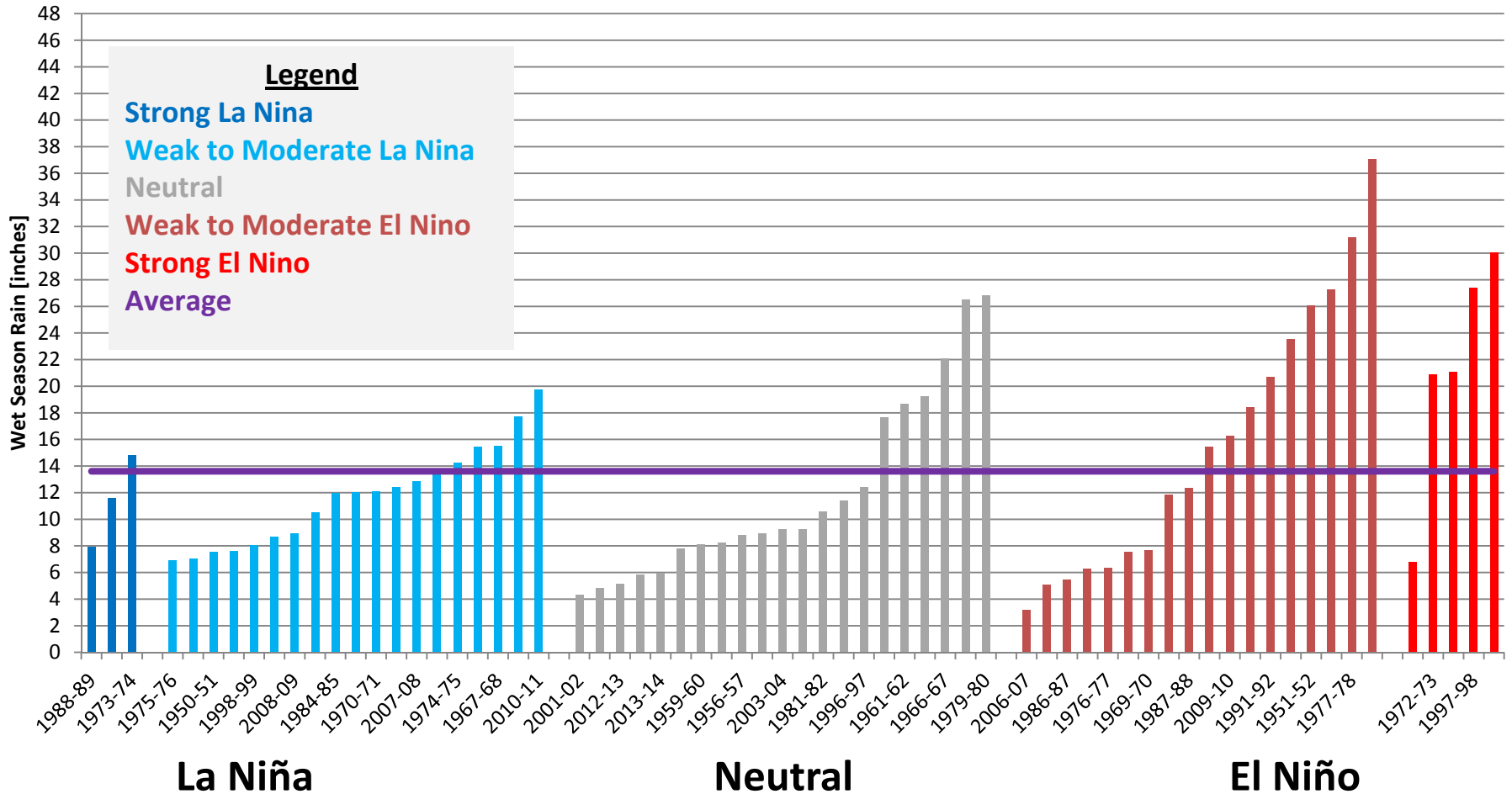
# ENSO neutral currently, but odds favor a weak La Nina this winter



# Rainfall by ENSO-Type

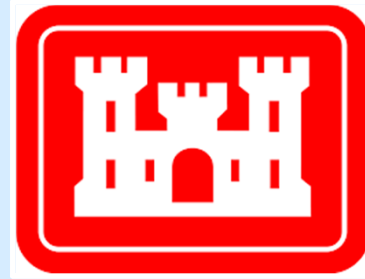
## Los Angeles (CQT)

Downtown Los Angeles Wet Season Rainfall, by ENSO-Type





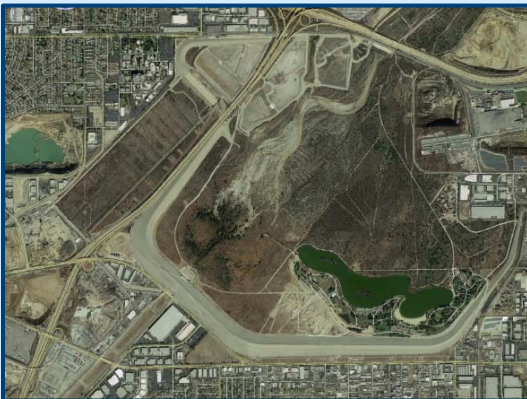
**HANSEN DAM**



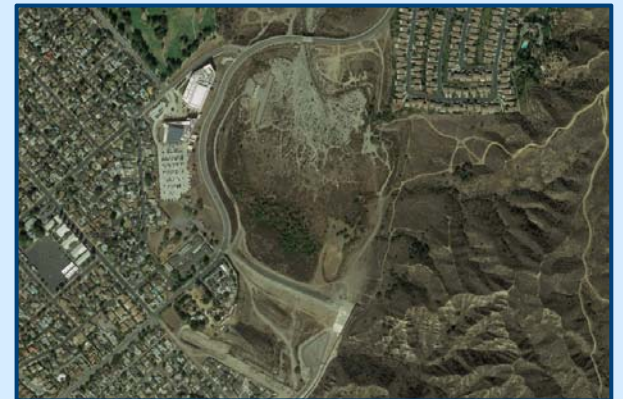
**SEPULVEDA DAM**



**WHITTIER  
NARROWS DAM**



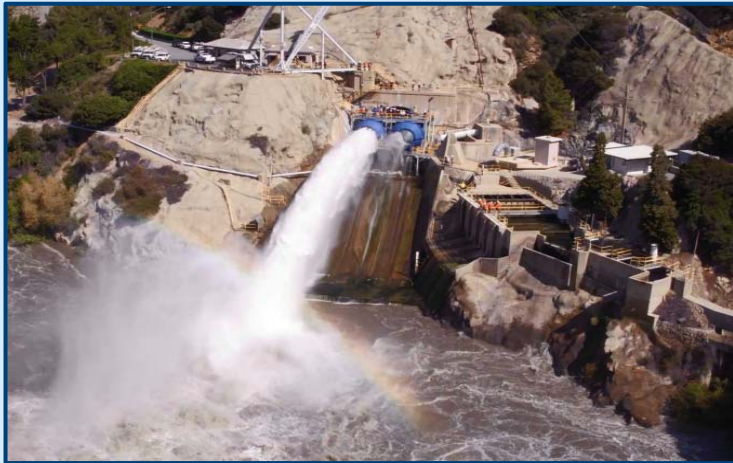
**SANTA FE DAM**



**LOPEZ DAM**



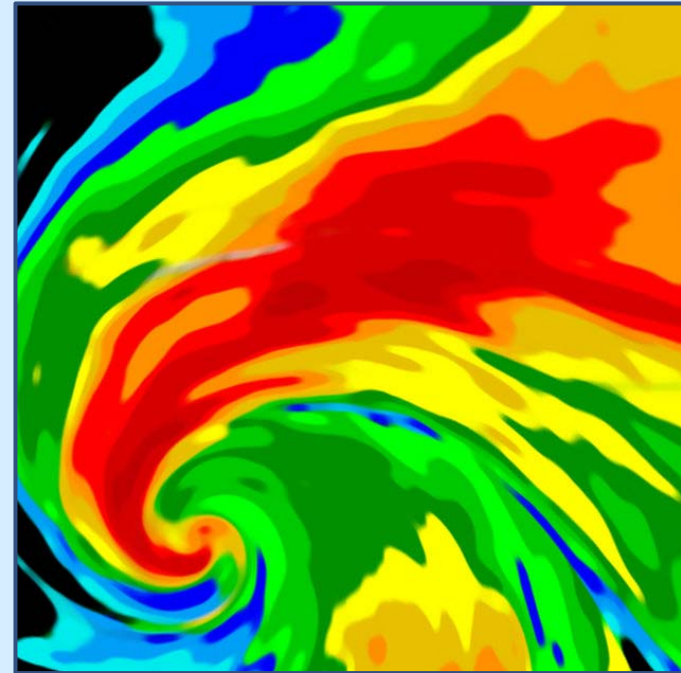
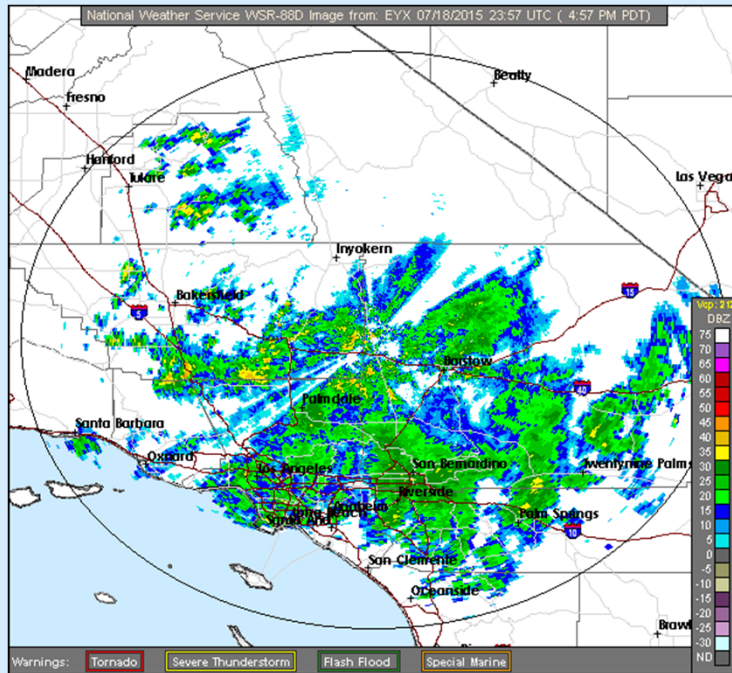
# LACFCD Dams



# Spreading Grounds

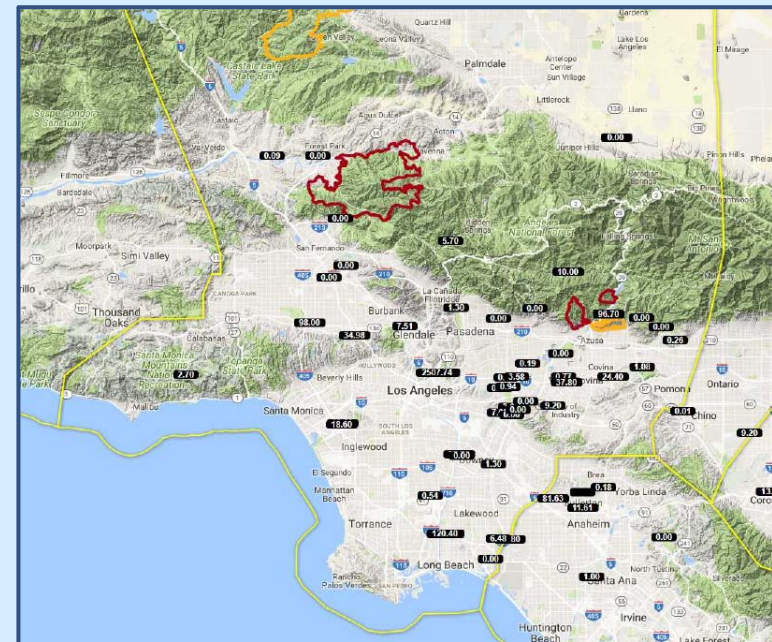
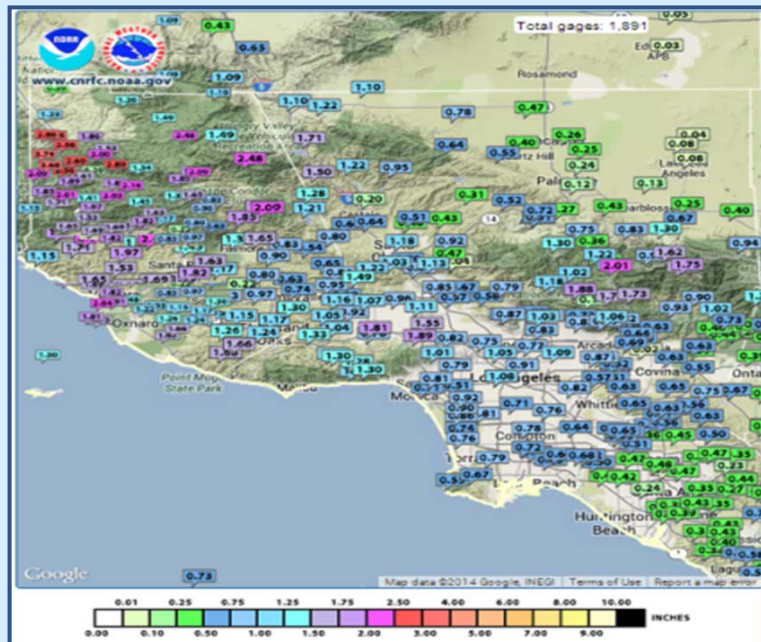


# Storm Operations



- Monitor forecasts from National Weather Service and weather forecasting consultant
- Monitor radar on computer and phone apps

# Storm Operations



- Monitor real-time rainfall, stream flow, and reservoir levels
- Coordinate activities with Army Corps facilities

# Storm Operations



- Activate Department Operations Center as necessary

# Questions?

