

LOS ANGELES BASIN STORMWATER CONSERVATION STUDY

Los Angeles County Flood Control District
U.S. Department of the Interior – Bureau of Reclamation

Southern California Water Committee
Stormwater Task Force

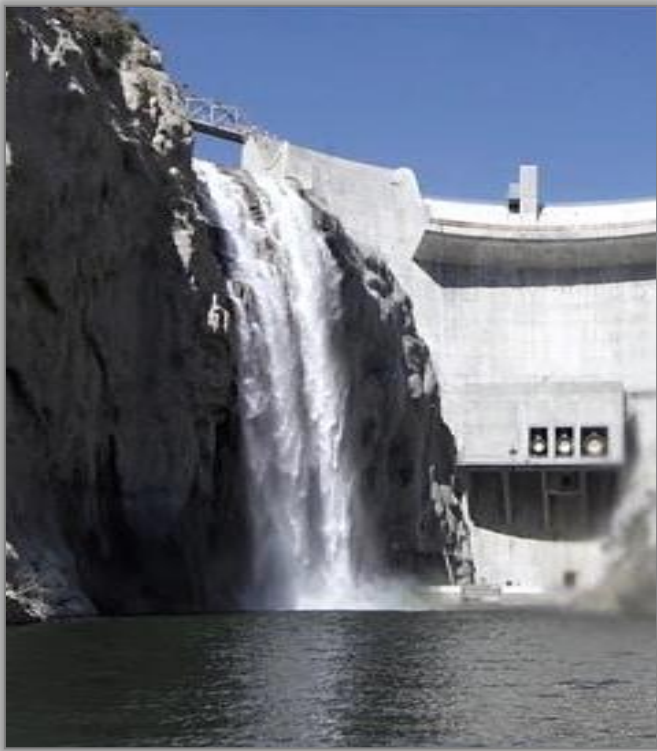
January 22, 2015

Lee Alexanderson, P.E.



CORE OBJECTIVES

- 1) Evaluate ***EXISTING*** water conservation under ***FUTURE*** conditions
- 2) Evaluate ***POTENTIAL NEW*** facilities & operational changes for climate change



**KEY
CONSIDERATIONS**

» *Climate Change*
» *Population Growth*

STUDY ELEMENTS



**Downscaled
Climate
Change &
Hydrologic
Modeling**



**Water
Supply
&
Demand
Projections**



**Existing
Infrastructure
Response**



**Develop
Stormwater
Conservation
Concepts**

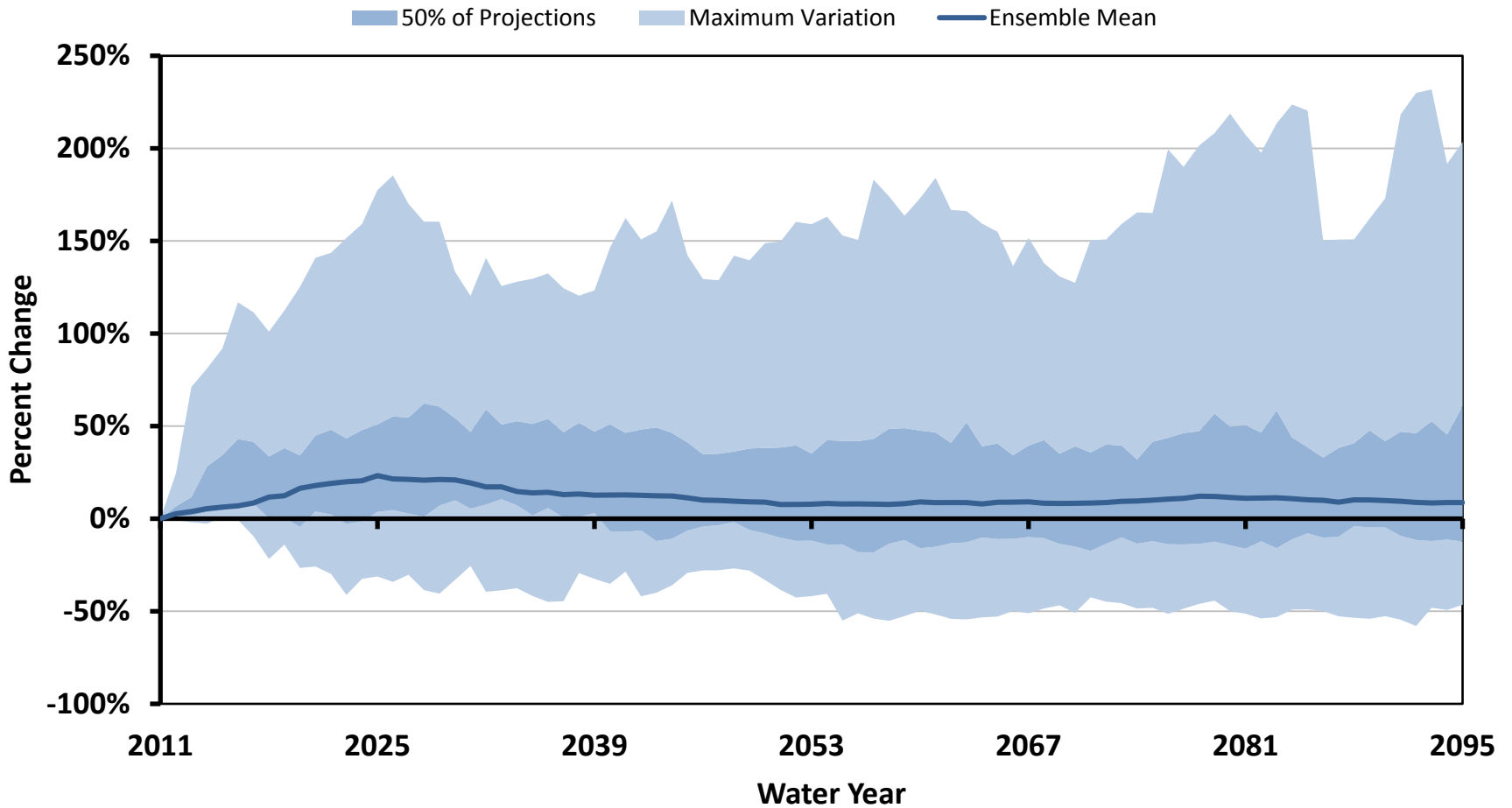


**Tradeoff
Analysis
&
Recommendations**



A NEED FOR CLIMATE RESILIENCY

Variability in Average Annual Stormwater Runoff Volume
Areal Watershed Average for WY 2012-2095



ENHANCING STORMWATER CAPTURE



Hansen Spreading Grounds

Google earth

THE BIG PICTURE

GOAL

*Tool for future planning by
LACFCD & Local Partners*



Enhancing the Water Conservation System to Address Future Conditions

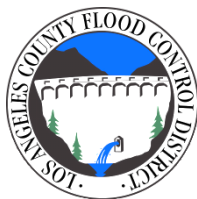
STUDY OUTCOMES



CONTACT

LOS ANGELES BASIN STORMWATER CONSERVATION STUDY

<http://www.usbr.gov/lc/socal/basinstudies/LABasin.html>



LACFCD Contact:

Lee Alexanderson, P. E.
County of Los Angeles
Department of Public Works
Los Angeles County Flood Control District
Watershed Management Division
(626) 458-4370
lalexanderson@dpw.lacounty.gov

Reclamation Contact:

Jack Simes, Planning Officer
Department of the Interior
Bureau of Reclamation
Lower Colorado River Region
Southern California Area Office
(951) 695-5310
jsimes@usbr.gov