

Stormwater Pilot Program

SCWC STORMWATER WORKSHOP

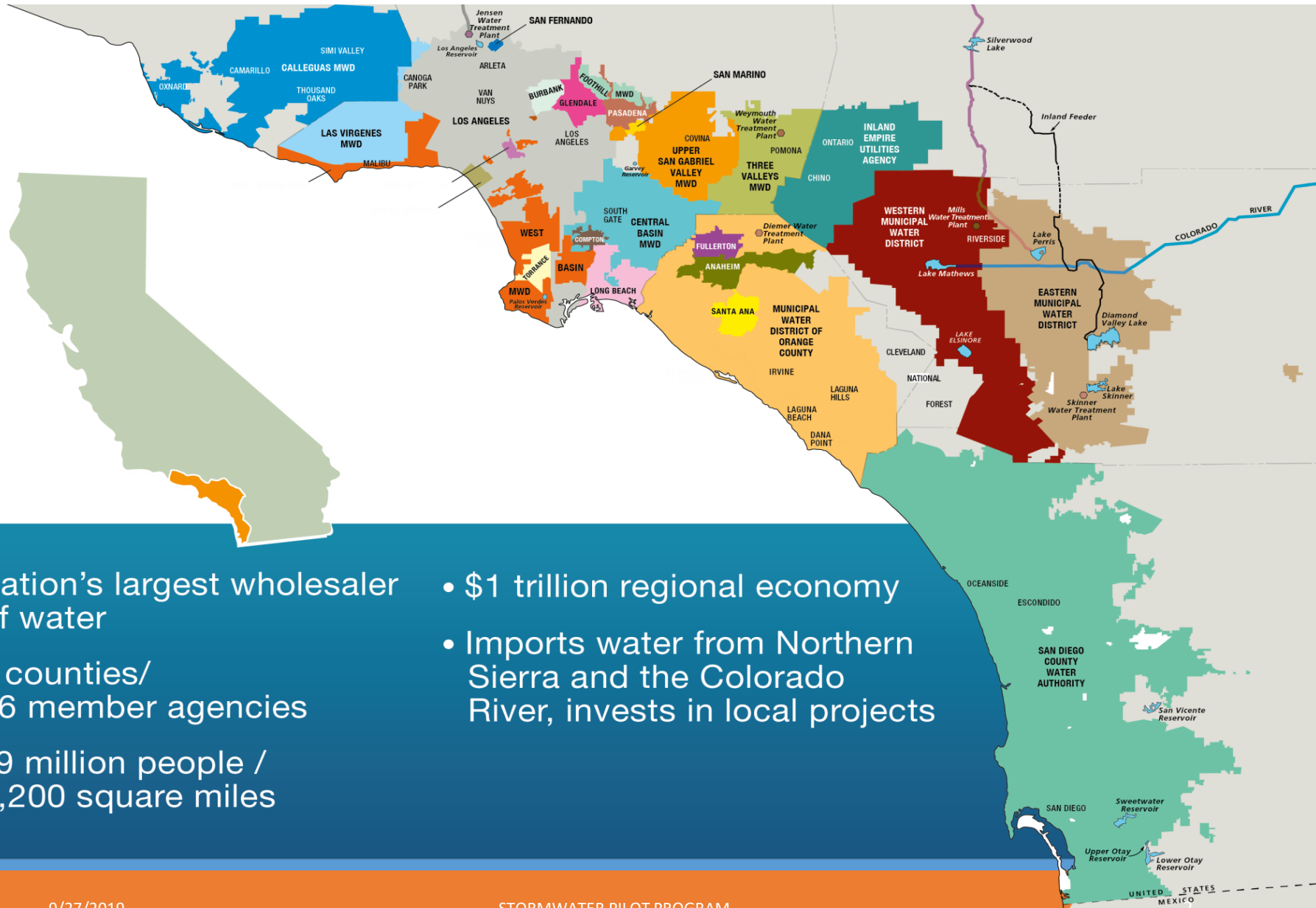
SEPTEMBER 27, 2019

MATTHEW HACKER, P.G.

METROPOLITAN WATER DISTRICT OF SOUTHERN
CALIFORNIA

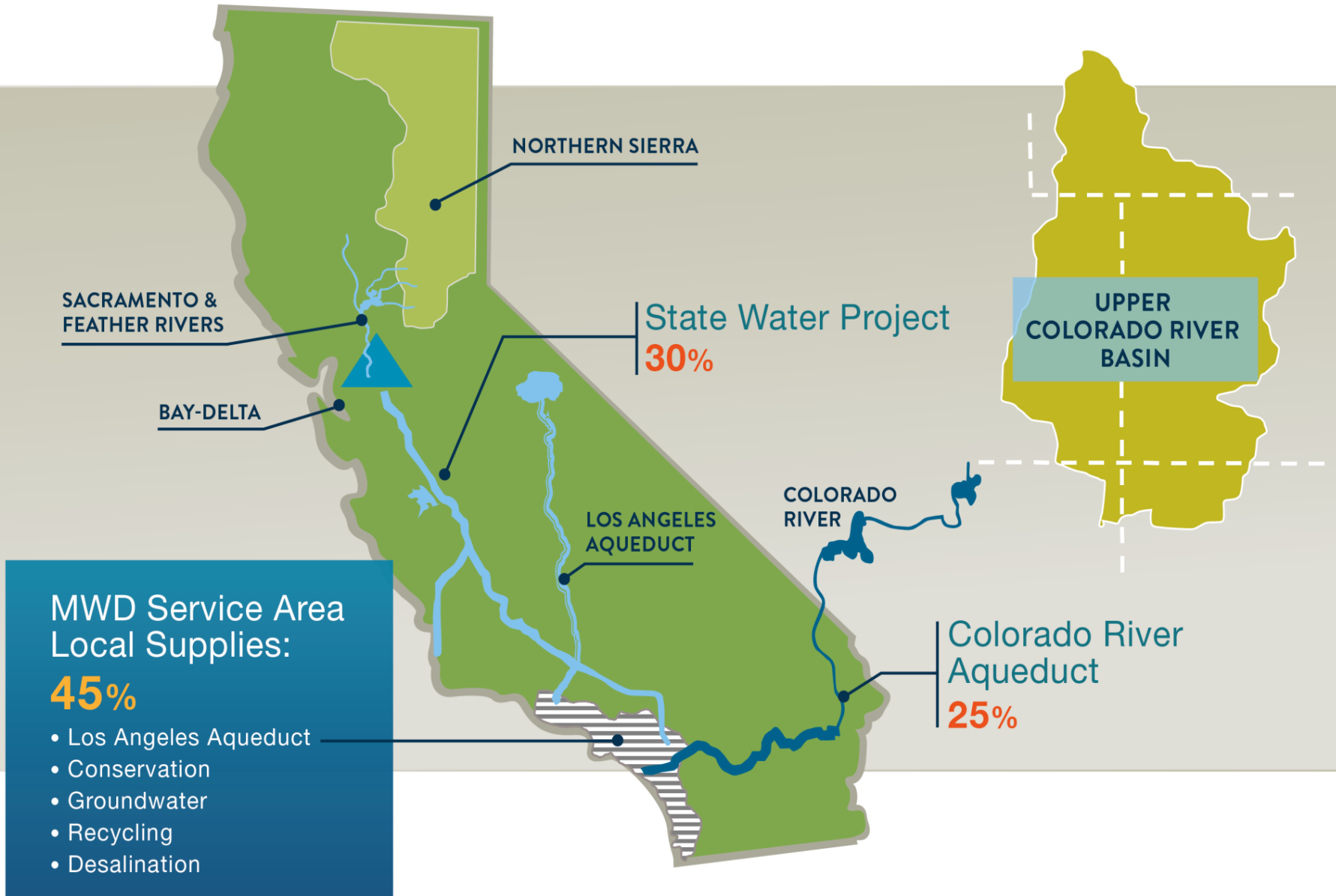


ABOUT METROPOLITAN



- Nation's largest wholesaler of water
- 6 counties/ 26 member agencies
- 19 million people / 5,200 square miles
- \$1 trillion regional economy
- Imports water from Northern Sierra and the Colorado River, invests in local projects

CURRENT SOURCES FOR SOUTHERN CALIFORNIA



Understanding of Stormwater

Where we're going

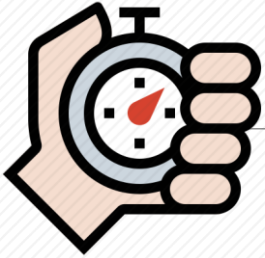
How can
Metropolitan
incentivize
stormwater
projects?

- Stormwater Direct Use Pilot
 - Approved in September 2019
- Stormwater Recharge Pilot
 - What is the relationship between capture and yield?
 - Roll-out of proposed Stormwater Recharge Pilot criteria

Outline for Discussion

- Stormwater Direct Use Pilot
- Capture vs. Yield
- Proposed Stormwater Recharge Pilot Criteria
 - Eligibility requirements
 - Program criteria
 - Funding structure
 - Pilot program implementation

Stormwater Direct Use Pilot



Program Start

- Approved by Board in September 2019
- Application period starts January 2020



Budget

- \$5.0 million



Eligible Projects

- Public/private sites
- New construction and retrofit

Capture vs. Yield

Capture



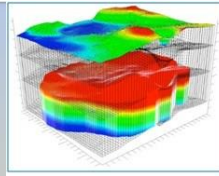
Infiltration



Recharge

Monitoring

Wells, lysimeters, modeling



Yield



Increased production above baseline

OR

Reduced demand on MWD

Production

Basin manager approves additional pumping



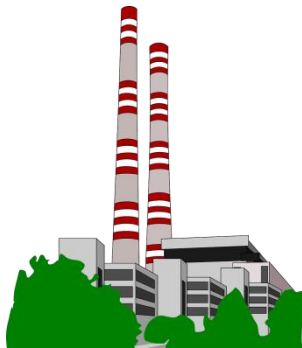
Groundwater Basin

Proposed Stormwater Recharge Pilot Criteria

Stormwater Recharge Pilot

Proposed Eligibility Requirements

- Open to all member agencies
 - Non-MWD agencies must partner with MAs
- Public/private sites (non-residential)
- New construction or monitoring equipment installation projects



Stormwater Recharge Pilot

Proposed Program Criteria

Must have an estimated capture of at least 40 AFY

Must be new water

Must be with Metropolitan's service area

Must have right to capture water

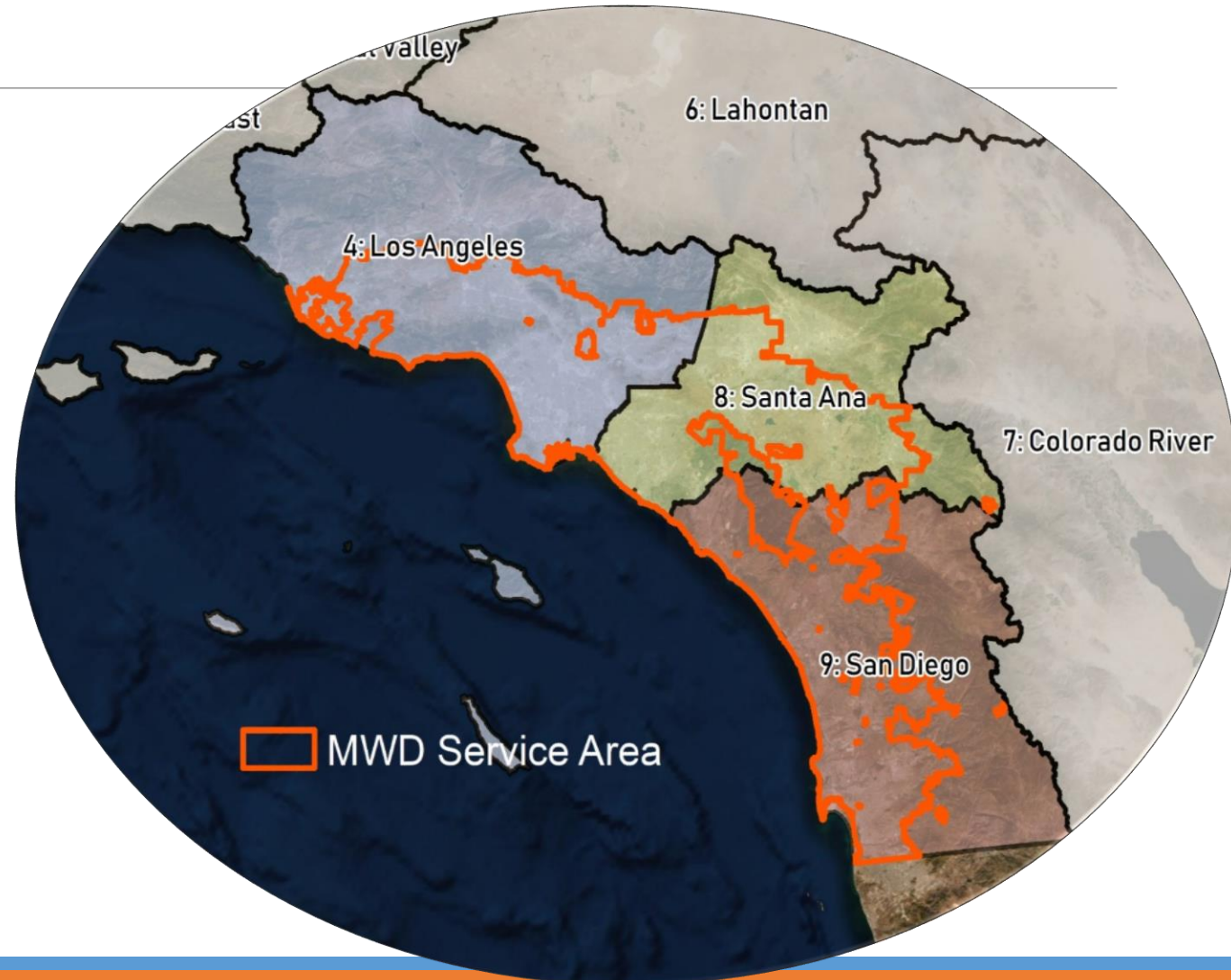
Increases total recharge to a groundwater basin

Does not impact downstream users

Stormwater Recharge Pilot

Proposed Project Criteria – Regional Distribution

- No more than 5 projects from any Regional Board area
- No more than 2 projects per groundwater basin
- Additional projects will be placed on a waiting list



Stormwater Recharge Pilot

Proposed Program Criteria - Monitoring & Reporting

- Collect at least 3 years of monitoring data
 - Measure capture and recharge
 - Demonstrate how stored water recharges usable groundwater
 - Show how groundwater production will increase
 - Assess cost data related to water supply
- Submit at least 3 annual reports



Pilot Program Elements

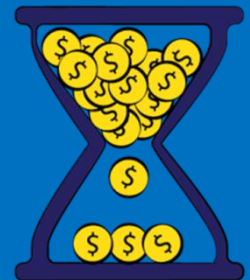
Proposed Budget

- Up to 10 projects
- \$7.5 million
- Maximum of \$1 million/new construction (including monitoring)
- Maximum \$500,000 per monitoring retrofit installation



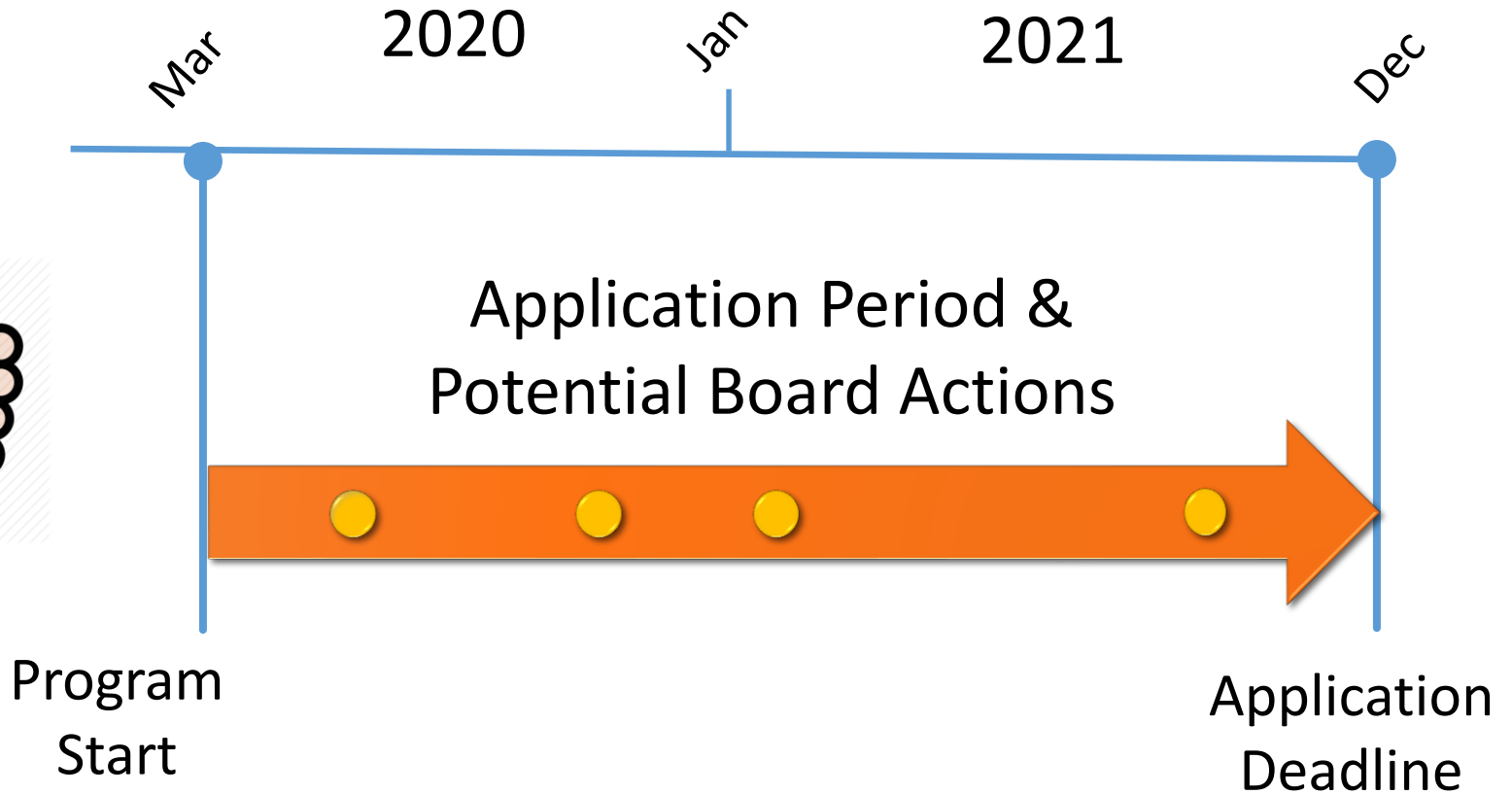
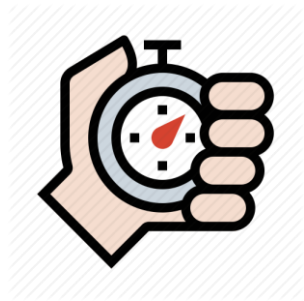
Proposed Duration

- Anticipated start: March 2020
- New project construction duration: up to 3 years
- Retrofit monitoring installation: up to 1 year
- Minimum monitoring for all projects: at least 3 years



Stormwater Recharge Pilot

Proposed Application Period



Next Steps

- Metropolitan Board approval this fall
- Continue discussions with member agencies and pursue other outreach opportunities
- Prepare for application period in March 2020



Questions???

Matthew Hacker, P.G.
Metropolitan Water District of Southern
California

Telephone: (213) 217-6756
Email: mhacker@mwdh2o.com