

Stormwater & Collaboration



CALIFORNIA STORMWATER
QUALITY ASSOCIATION®

Southern California Water Coalition 2019 Stormwater Workshop

September 27, 2019

Daniel Apt CHAIR OF THE CALIFORNIA
STORMWATER QUALITY ASSOCIATION

Vision for Sustainable Stormwater Management

Vision for Sustainable Stormwater Management

Vision:

Manage stormwater as a vital component of California's water resources in a sustainable manner, to support human and ecological needs, to protect water quality, and to enhance and restore our waterways

California Stormwater Quality Association

August 2019



- 2014: CASQA's *Vision and Strategic Actions for Managing Stormwater in the 21st Century*
- 2017 & 2019 : Updated to include recent initiatives (e.g. STORMS, CA Water Plan), reflect the evolution of the stormwater field, and integration of sustainability concepts.
- 2020: More comprehensive update to be completed by May, MS4-POTW workshop and follow on meetings to inform this update



CASQA's Vision



Principle 1: Sustainable stormwater management uses runoff as a resource, protects water quality and beneficial uses, and efficiently minimizes pollution

Principle 2: Policies, regulations, guidance, training, and funding need to support sustainable stormwater management.

Principle 3: Public awareness, understanding, and appreciation of the value of stormwater is essential to sustainable stormwater management

Stormwater is a Valuable Resource

- Stormwater and dry-weather urban runoff:
 - Resources with social, economic, and ecological value
 - Provide opportunities for water resource augmentation
 - Value of these resources should be a core element of integrated planning & collaborative projects
- Stormwater capture:
 - Opportunities to achieve more stormwater capture
 - Various scales (LID, Green Infrastructure, Regional Capture)
 - Remove barriers to stormwater capture and use
 - Integrated water resource planning

Collaboration & Partnerships

- State Water Resources Control Board
 - Strategy to Optimize Resource Management of Stormwater (STORMS)
 - Implementation Committee (ACWA, CASA, CASQA, CCEEB, CCKA)
 - STORMS Projects – Project Advisory Groups, Technical Advisory Committees
 - Stormwater Training (CGP & IGP)
- Department of Water Resources
 - California Water Plan
 - Integrated Water Resources Management (IRWM)
- Stormwater JPA
- Water Environment Federation (WEF) Stormwater Institute
- National Municipal Stormwater Alliance (NMSA)
- Many others



Collaboration & Integrated Water Resources

- Collaboration is imperative to achieving effective integrated management of California water resources as well as CASQA's Vision.
- Developing partnerships and working with other water management organizations is a key component in CASQA's Strategic Plan.
- Primary potential areas of collaboration include:
 - Resource augmentation
 - Regulatory collaboration

Collaboration – Promoting Stormwater in IRWMPs

- **PURPOSE:** How to promote and better integrate stormwater in IRWMPs.
- **Vision Action 1.1: Promote Stormwater as a Resource**
 - Meet with DWR & SWRCB to determine most appropriate approach to guide the integration of stormwater in IRWMPs
 - Meetings in October 2018 & August 2019
 - Involvement of IRWM Roundtable of Regions
 - Outcomes to date:
 - Collaboration on California’s Water Resilience Portfolio comments with IRWM Roundtable of Regions on comments
 - Planned research to identify of regions where stormwater has been effectively integrated
 - Continue to collaborate with DWR, SWRCB, and IRWM Roundtable on better stormwater integration



Stormwater & Wastewater Collaboration Workshop



California Stormwater Quality Association
Dedicated to the Advancement of Stormwater Quality Management, Science and Regulation

CASQA Position Paper:

Publicly Owned Treatment Works (POTW) / Sanitary Sewer & Municipal Separate Storm Sewer System (MS4) / Stormwater Collaboration

PURPOSE: To support identification of opportunities for collaboration with the POTW / wastewater community and develop mechanisms to proactively address barriers to collaboration in support of [CASQA's Vision for Sustainable Stormwater Management](#), specifically Vision Actions 1.1¹, 1.2², 2.4³, 2.5⁴, and 3.2⁵.

RATIONALE: Collaboration between MS4s and POTWs is imperative to achieving effective integrated management of California water resources as well as CASQA's Vision for Sustainable Stormwater Management. Developing partnerships and working with other water management organizations, such as the California Association of Sanitation Agencies (CASA), the Southern California Alliance of POTWs (SCAP), and POTWs in general is a key component in CASQA's Strategic Plan. POTW and MS4 collaboration can help address management issues of mutual interest while helping to remove traditional water management silos and achieve sustainable stormwater management through an integrated water resources management approach. This Position Paper addresses two potential areas of collaboration, (1) resource augmentation (diversions) and (2) regulatory collaboration.

Historically, diversions of dry-weather urban runoff to sanitary sewer have been used for recreational water resource protection, principally coastal waters at beaches, however a paradigm shift is occurring where some POTWs are considering diversions for water resource augmentation. Resource augmentation is needed by some POTWs to compensate for diminished flows within their collection system due to water conservation efforts. Diversions of urban runoff⁶ are also being considered to provide additional water supply (e.g. recycled water) and potentially provide an additional revenue source. Diversions also have the potential to provide cleaner POTW discharges to receiving waters. Additionally, when addressing water quality regulations, opportunities for collaboration between POTWs and MS4s or implementation issues may arise. Upfront identification of potential areas for collaboration and potential implementation issues, support more effective regulation development and more sustainable solutions.

GOAL/AUDIENCE: Provide a strategy for the MS4/stormwater community and the POTW/wastewater community to collaborate on common issues that result in sustainable stormwater management.

Strategy for Resource Augmentation (Diversions)

Stormwater is a resource, with social, economic, and ecological value and should be managed in a sustainable manner. Similarly, dry-weather urban runoff is also valuable resource. Both stormwater runoff and dry-weather urban runoff provide significant opportunities for water resource augmentation for POTWs and MS4s, and the value of this resource augmentation should be considered as a core element in POTW and MS4 collaboration regarding diversions. Collaboration between MS4s and POTWs regarding the diversion of urban runoff to the sanitary sewer and wastewater treatment facilities can result in improved water quality and more opportunities for the capture and

¹Action 1.1: Promote Stormwater as a Resource

²Action 1.2: Identify Constraints and Opportunities for Maximizing Stormwater as a Resource

³Action 2.4: Develop Permitting Policies / Framework Focused on Sustainable Stormwater Management

⁴Action 2.5: Establish Funding for Stormwater Programs

⁵Action 3.2: Create Opportunities for Multiple Agency and Collaborative Efforts to Demonstrate the Value of Stormwater to the Public

⁶Urban runoff includes dry-weather runoff and wet-weather runoff which is also stormwater runoff.

- Hosted by CASQA & SCAP on August 29, 2019
 - Organized with assistance from SWRCB & SCCWRP
- MS4s, POTWs, Regulatory Agencies, Academia
- Purpose: Identifying opportunities for enhanced collaboration between stormwater and wastewater agencies in diversion of urban runoff
- Outcomes: Potential solutions identified
 - Primary solution: Integrated planning guidance and tools needed
- CASQA Position Paper developed prior to the workshop:
 - PURPOSE: Support opportunities for collaboration with the POTW / wastewater community & address barriers to collaboration in support of CASQA's Vision

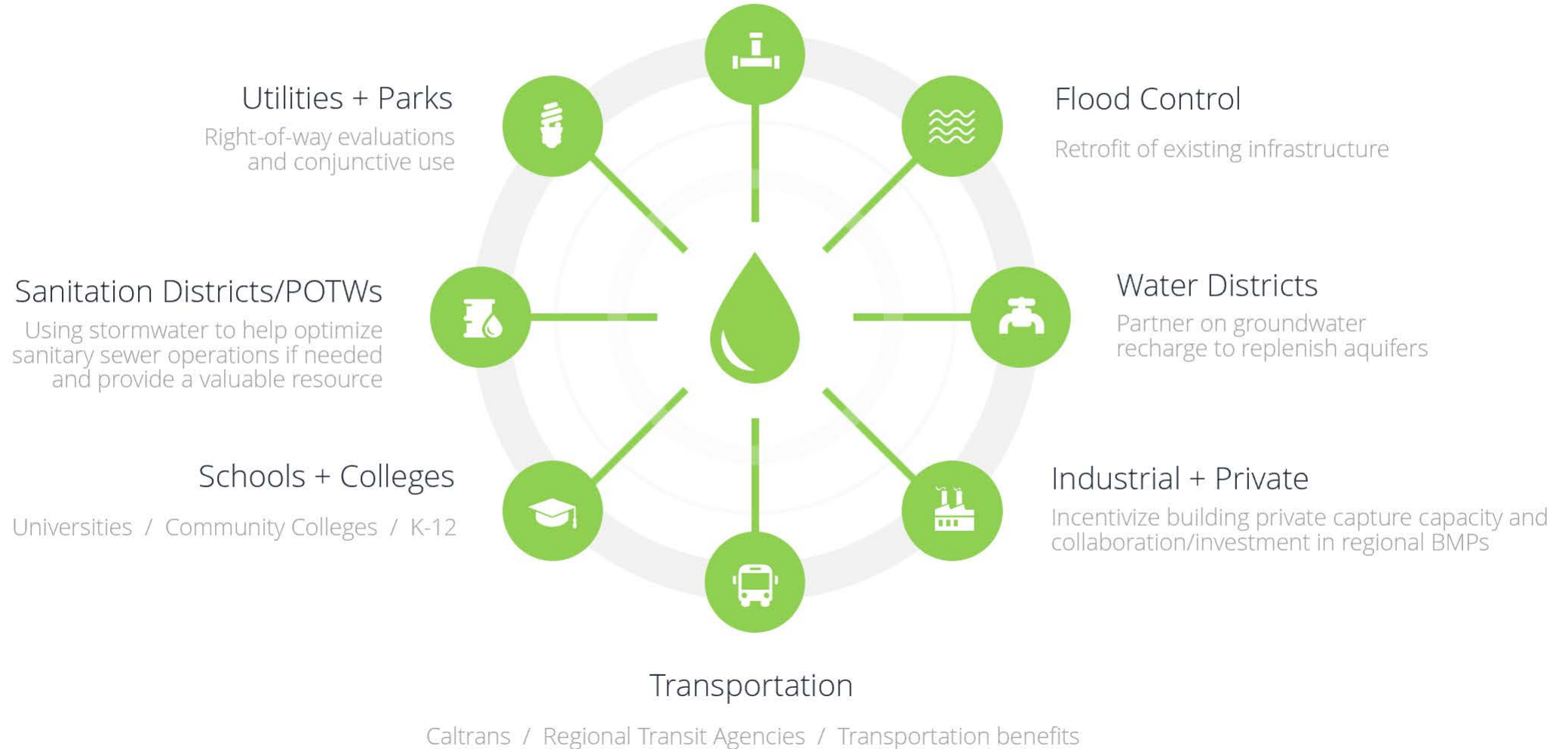


CALIFORNIA STORMWATER
QUALITY ASSOCIATION

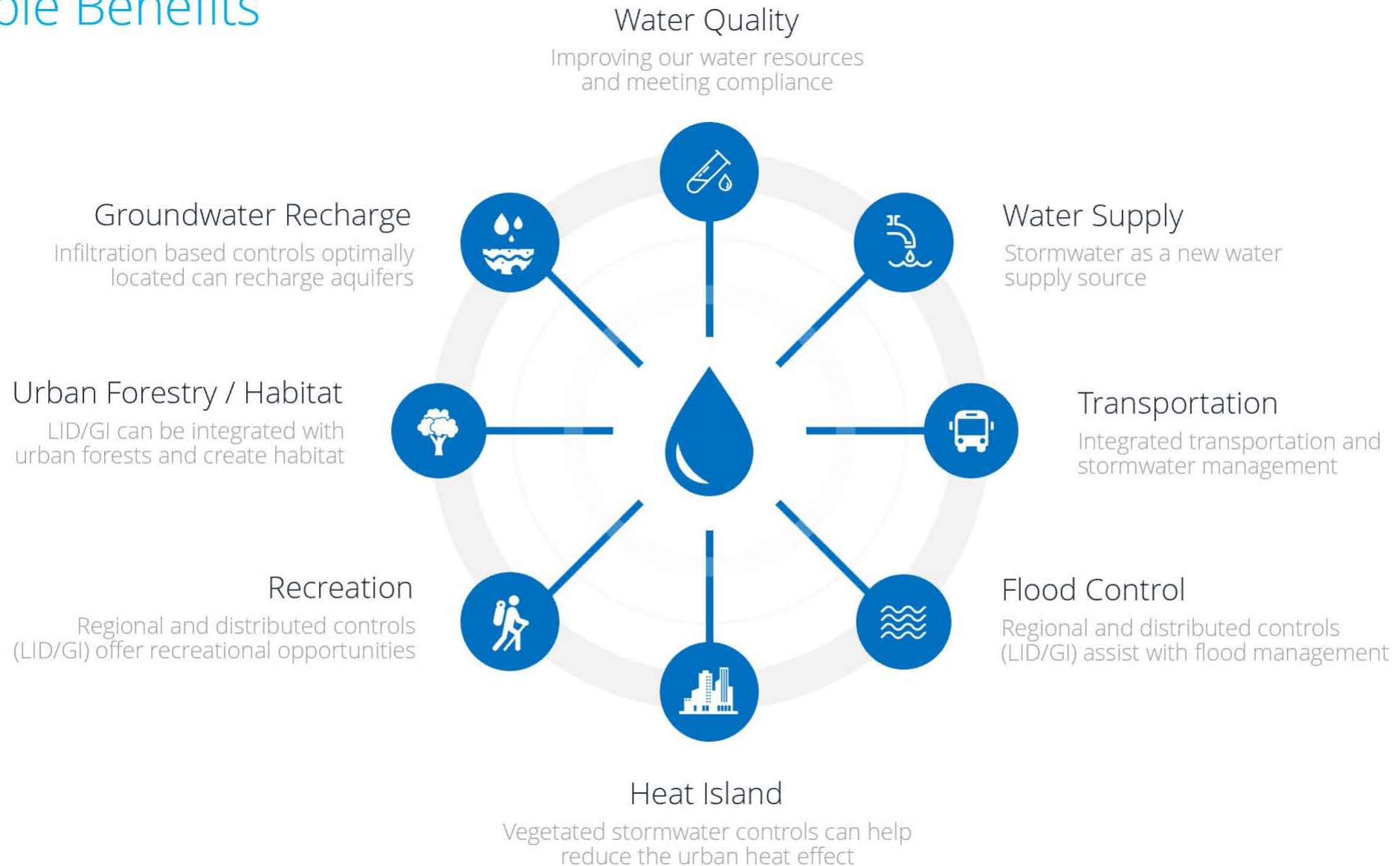
Multiple Partners

MS4s

Phase Is / Phase IIs / Non-traditional Phase IIs



Multiple Benefits



The DesiloficA^{ti}on of Water



Potable Water

Potable water supplies in California will continue to be stressed with climate change and drought, increasing costs and need to be augmented with new sources.



Wastewater & Recycled Water

Wastewater is facing new challenges in California due to water conservation as well as the increasing demand for recycled water and optimization of systems.



Ground Water

Groundwater in California is one of our most precious water resources and presents significant opportunities for long term storage of our water supply.



Stormwater

Stormwater is a vital component of California's water resources and should be managed in sustainable manner to protect water quality, restore our waterways and ecology, and provide a new water resource.

**Working together we can make a
difference!**



CALIFORNIA STORMWATER
QUALITY ASSOCIATION®